



# NetProject (brief profile)

**Vsevolod Shabad**  
CEO and founder

**vshabad@netproject.ru**  
**+7 (985)765-7603**

# System integrator with strong G&G focus

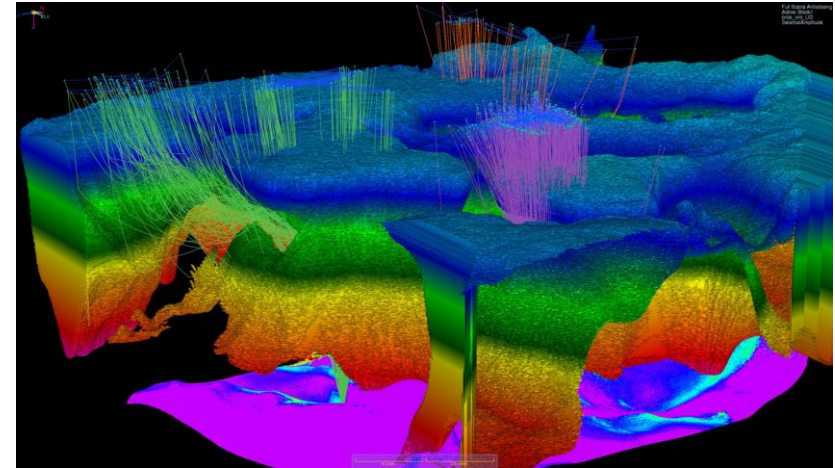
We build and expand the IT infrastructure for Geological and Geophysical applications



# Competencies

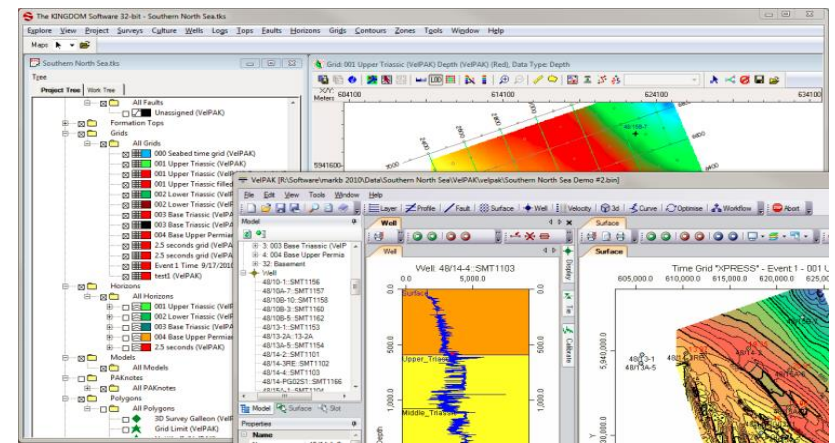
## Seismic processing

- Paradigm ES 360, GeoDepth, Echos
- Schlumberger Omega
- Landmark SeisSpace ProMAX
- CGG Geocluster



## Seismic interpretation

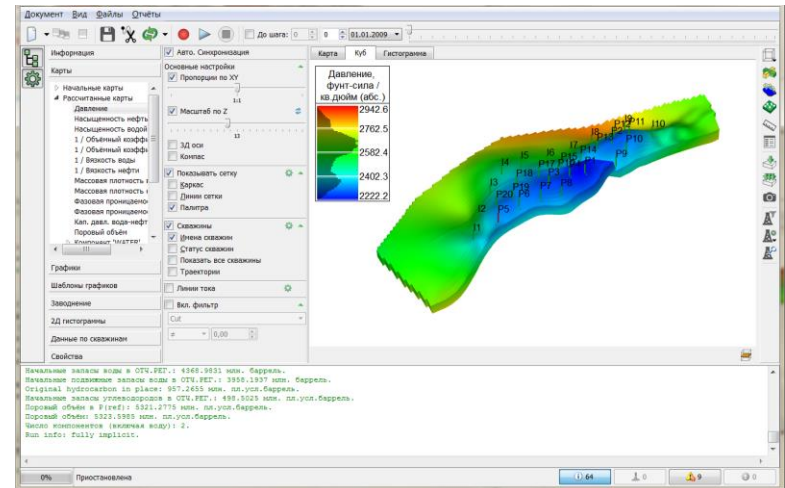
- Paradigm SeisEarth, SKUA, VoxelGeo
- Schlumberger Petrel
- Landmark GeoProbe
- IHS Kingdom



# Competencies

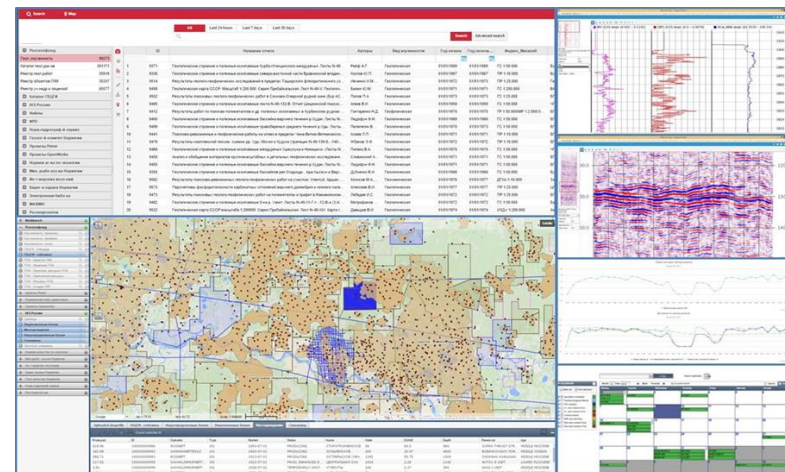
## Reservoir modeling

- RockFlow Dynamics
- tNavigator
- Schlumberger Eclipse
- Roxar Tempest



## G&G data management and archiving

- KADME Whereoil



# Our added value

## Saving the customer's money

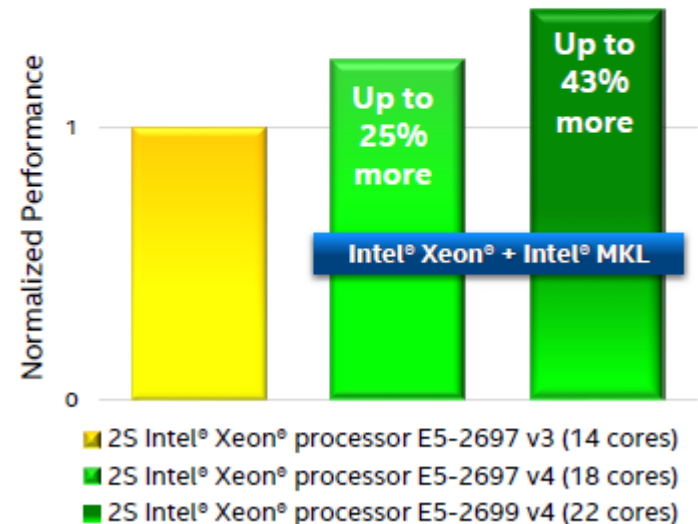
- performance acceleration
- downtime reduction
- data loss prevention
- remote work facilitation



www.pdgm.com

### Technical Computing - Geoscience

Paradigm EarthStudy 360 increased performance by up to 1.43X with the 2S Intel® Xeon® processor E5-2699 v4<sup>1</sup>



Workload: Paradigm EPOS\_geodepth - migration time

# Infrastructure components

## High-performance clusters (HPC)

- compute and file nodes
- workload management schedulers

## Low-latency networks with RDMA:

- Infiniband FDR/EDR
- Ethernet 10/40/56/100G

## High-performance storage:

- sequential I/O (seismic processing)
- random I/O (seismic interpretation)

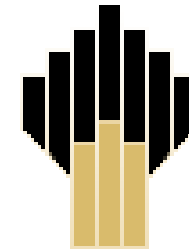
## Remote graphics workstations infrastructure:

- VDI clusters with strong GPU support
- WAN-optimization appliances

# Industry experience for Oil & Gas (Russia)



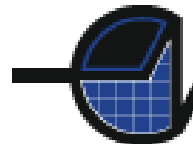
**НОВАТЭК**



**РОСНЕФТЬ**



**БАШНЕФТЬ**



**БАШНЕФТЕГЕОФИЗИКА**

ОТКРЫТОЕ АКЦИОНЕРНОЕ ОБЩЕСТВО

# Product portfolio

**Servers — Lenovo, HPE, DELL, Fujitsu, Cisco, Huawei, Intel, Supermicro, Inspur, Sugon, ...**

**Storage — NetApp, IBM, HPE, HDS, Panasas, Huawei, EMC, Fujitsu, ...**

**Networking — Mellanox, Cisco, Extreme, Lenovo, Huawei, Brocade, Riverbed, Citrix**

**Backup — CommVault, Acronis, IBM, HPE, Quantum**

**Virtualization — Citrix, VMware**

**Resource scheduling — IBM Platform, Altair, Adaptive Computing**



# Company strengths

## Strong industry focus on G&G IT infrastructure

### Deep knowledge and experience:

- Industry specifics and major applications:
  - better than most system integrators and IT infrastructure vendors
- IT infrastructure products and technologies
  - better than most G&G software vendors

Advanced project management methodology

Structured knowledgebase of past projects

High engineering culture of staff

Deep customer involvement in projects

# Company weaknesses

**Strong industry focus on G&G IT infrastructure**

**Low level of company brand recognition**

**Lack of overseas market experience**

**A small number of employees**

**Limited financial resources**

# Company background in brief

## Technology experience:

- Networking since 1996
- Storage since 2004
- Servers since 2006
- VDI since 2010
- HPC since 2014

## Oil & Gas industry focus since 2012

- metallurgy and banking focus in 1996-2014

## Big Data experience since 2007

## ISO 9001:2008 certified since 2012

# Let's run together!



<http://www.netproject.ru>